

# MILDURA SPECIALIST SCHOOL

Newsletter No : 3

DATE: 10 March, 2022

We value being: **RESPECTFUL** **SAFE** & **RESPONSIBLE**

**Child Safe:** Mildura Specialist School is committed to safety and wellbeing of all children and young people and has a zero tolerance for child abuse.



Striving for Independence

## DATES TO REMEMBER

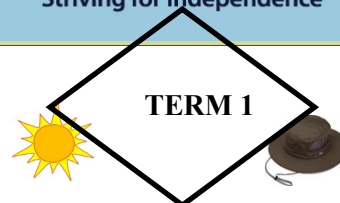
14 March - Public Holiday - No school

17 March - Year 7 immunisations and Meningococcal

21 - 25 March - Lake Cullulleraine Day Excursions - Upper Primary—VCAL

8 April - Last Day of Term 1

26 April - 1st Day of Term 2



## Principal's Report

### Awards

Congratulations to our Award winners this week. Well done.



**School Council** – We require one parent representative. Nominations are available from the office and close 18 March. Please contact Sharyn Morris.

### COVID -19

Thank you to everyone for your continued communication and support with the current arrangements in place to reduce the spread of COVID 19. Please notify the office by Friday this week if you would like to be included in a vaccination hub in the coming weeks.

### Health and Wellbeing

#### Staff wellbeing

In acknowledgement of the stresses the pandemic has added to staff workload and the hours teachers continue to put in, we have prioritised staff wellbeing with the provision of professional learning. All staff participated in a virtual program called Bounce Back with the final session held last Tuesday. We learnt about maintaining our energy levels and being aware of how to be our best selves at work and home. Importantly we talked about giving ourselves permission to slow down at home after the go, go nature of our day to day work. As part of this program all staff have been given access to online resources and a text book. Thank you to all our staff for your work every day and commitment to develop interesting, engaging programs for students.

#### Student Wellbeing

Every day all classes hold a Circle Time session from 9.00-9.30am. This is a time to go through the schedule for the day, to provide food if needed and to explicitly teach our values of being safe, respectful and responsible. Depending on the needs of the students, this could involve being safe using social media or harm minimisation concerning drugs and alcohol.

#### Student Wellbeing

Every day all classes hold a Circle Time session from 9.00-9.30am. This is a time to go through the schedule for the day, to provide food if needed and to explicitly teach our values of being safe, respectful and responsible. Depending on the needs of the students, this could involve being safe using social media or harm minimisation concerning drugs and alcohol.

P.O. Box 63CP Mildura 3501  
Principal: Penny Hale  
Assistant Principal: David Wright  
Email: [mildura.ss@education.vic.gov.au](mailto:mildura.ss@education.vic.gov.au)  
Web Address: [www.mildss.vic.edu.au](http://www.mildss.vic.edu.au)

Please note: The Department (which includes our school) does not have accident insurance. Items of personal property that are lost, stolen or damaged at school are not the responsibility of Mildura Specialist School or the Department. Staff and students are reminded not to bring items of value to school.

### **Smoking and Vaping**

Please read the flyer in our newsletter about smoking and vaping. Students smoking or vaping on or near school grounds will be asked to hand over their items and parents/carers will be contacted.

In Victoria it is illegal for any person aged 18 or over to obtain, possess or use nicotine e-cigarettes, or e-cigarette cartridges containing nicotine, or nicotine liquids for use in a vaporiser, without a prescription. It is illegal to sell e-cigarettes to, or buy e-cigarettes for, any person aged under 18 years whether or not the e-cigarettes contain nicotine. Whilst it is not unlawful for a person to possess or use e-cigarettes that do not contain nicotine, it is unlawful to use them on school premises or within 4 metres of a school entrance.

This link may be useful if you would like to talk to your child about smoking and vaping:

<https://www.rchfoundation.org.au/2020/02/child-health-poll-on-e-cigarettes-vaping-and-teens/>

### **Mobile phones**

Students who choose to bring mobile phones to school must have them switched off and securely stored during school hours. Parents and carers will be contacted if students refuse to hand their phones in at school. This is a Ministerial policy. Repeated occurrences of failing to hand in a phone will result in a loss of privileges.

### **National Day of Action Against Bullying**

Please see the flyer about the Bullying and Harassment for families.



Other fact sheets can be found at <https://bullyingnoway.gov.au/resources/fact-sheets/fact-sheets-for-families>

Please contact your child's teacher or a team leader by phone or email if you wish to discuss your child's learning and wellbeing.

#### **Team Leaders:**

Early Years and Upper Primary, Multisensory – Kate Tyson

Personal and Applied Learning – Matthew Leslie

PreCAL and VCAL – Heidi Milner

Enjoy the long weekend.

Penny Hale  
Principal

## SCHOOL SMOKING AND VAPING BAN

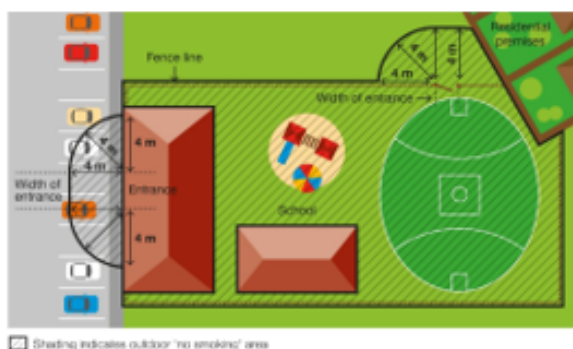
By law, smoking and vaping are banned within the grounds of, and within four metres of an entrance to, all childcare centres, kindergartens, preschools and schools.

## WHERE THE BAN APPLIES

The smoking and vaping ban applies to:

- anyone present on school premises during and outside of school hours including students, teachers, contractors, parents or carers or the wider community, such as sporting groups
- all activities that take place on school premises including pre-schools, kindergartens, outside school hours care, cultural, sporting or recreational activities and school fetes

Smoking and vaping are also banned within four metres of any part of a pedestrian access point (entrance) to the premises.



The diagram adjacent shows an example of where the smoking ban applies at a school.

## WHEN THE BAN APPLIES

The smoking and vaping ban applies at all times, no matter whether the building or school grounds are being used for education purposes or other purposes. The ban therefore applies when other activities are taking place on the school grounds, such as fetes or sporting events, as well as during school hours.

## WHY THE BAN EXISTS

**To protect children and young people from the dangers of second-hand smoke and vapour**

This ban ensures that children and young people can enter and leave these areas without being exposed to harmful second-hand smoke and vapour. Their health is particularly at risk because they have smaller airways and less developed immune systems compared to adults.

## To reduce the role modelling of smoking and vaping behaviours around children and young people

Children and young people are more likely to view smoking and vaping as socially acceptable when they regularly see people doing it.

Banning smoking and vaping in areas used by children and young people will discourage children and young people from using tobacco or e-cigarette products.

## DEFINING A PEDESTRIAN ACCESS POINT

A pedestrian access point in relation to premises means a door or gate by which a person can enter or exit the premises. It *does not* include an emergency exit that is locked to entry.

It *does* include shared doors or gates. For example, where a building is occupied by a childcare centre as well as other organisations, such as private businesses, any shared entrances that are used to access both areas of the building would be subject to the smoking ban.

Any entrances which lead only to premises not included in the smoking ban, such as the private offices, would not be subject to the smoking ban.

## WHAT PENALTIES APPLY

Fines are described under law in penalty units. From 1 July 2020 to 30 June 2021, a penalty unit is valued at \$165.22.

The penalty for breaking school smoking and vaping ban laws is a court fine of a maximum of five penalty units (\$826 as of 1 July 2020) or an infringement fine of one penalty unit (\$165 as of 1 July 2020).

The value of a penalty unit is set annually by the Department of Treasury and Finance and is updated on 1 July each year. For current penalty unit values, visit the Department's [website](http://www.dtf.vic.gov.au/financial-management-government/indexation-fees-and-penalties) <www.dtf.vic.gov.au/financial-management-government/indexation-fees-and-penalties>.

## FOR MORE INFORMATION

For more information:

- visit the [tobacco reforms website](http://www.health.vic.gov.au/tobaccoreforms) <www.health.vic.gov.au/tobaccoreforms>
- call the Tobacco Information Line on 1300 136 775

To view the [legislation](#) visit the Victorian Government's [legislation website](http://www.legislation.vic.gov.au) <www.legislation.vic.gov.au> and search *Tobacco Act 1987*.

**BULLYING. NO WAY!**

TAKE A STAND  
TOGETHER

[www.bullyingnoway.gov.au](http://www.bullyingnoway.gov.au)

## **Definitions of bullying, harassment, discrimination and violence**

Bullying, harassment, discrimination and violence are all interpersonal behaviours that can create or contribute to negative social environments. All school communities should have clear definitions outlined in their school policies and procedures for bullying, harassment, discrimination and violence.

### **Bullying**

The national definition of bullying for Australian schools says:

Bullying is an ongoing and deliberate misuse of power in relationships through repeated verbal, physical and/or social behaviour that intends to cause physical, social and/or psychological harm. It can involve an individual or a group misusing their power, or perceived power, over one or more persons who feel unable to stop it from happening.

Bullying can happen in person or online, via various digital platforms and devices and it can be obvious (overt) or hidden (covert). Bullying behaviour is repeated, or has the potential to be repeated, over time (for example, through sharing of digital records).

Bullying of any form or for any reason can have immediate, medium and long-term effects on those involved, including bystanders. Single incidents and conflict or fights between equals, whether in person or online, are not defined as bullying.

Behaviours that do not constitute bullying include:

- mutual arguments and disagreements (where there is no power imbalance)
- not liking someone or a single act of social rejection
- one-off acts of meanness or spite
- isolated incidents of aggression, intimidation or violence.

However, these conflicts still need to be addressed and resolved.

Likewise not all online issues are bullying. (Online bullying is sometimes referred to as cyberbullying and refers to bullying that is carried out through information and communication technologies.)

TAKE A STAND TOGETHER

**BULLYING. NO WAY!**

[www.bullyingnoway.gov.au](http://www.bullyingnoway.gov.au)

# BULLYING. NO WAY!

TAKE A STAND  
TOGETHER

www.bullyingnoway.gov.au

## Harassment

Harassment is behaviour that targets an individual or group due to their:

- identity, race, culture or ethnic origin
- religion
- physical characteristics
- gender
- sexual orientation
- marital, parenting or economic status
- age
- ability or disability.

It offends, humiliates, intimidates or creates a hostile environment. It may be:

- an ongoing pattern of behaviour or a single act
- directed randomly or towards the same person(s)
- intentional or unintentional.

## Discrimination

Discrimination occurs when people are treated less favourably than others because of their:

- identity, race, culture or ethnic origin
- religion
- physical characteristics
- gender
- sexual orientation
- marital, parenting or economic status
- age
- ability or disability.

## Violence

Violence is the intentional use of physical force or power, threatened or actual, against another person(s) that results in psychological harm, injury or in some cases death. It may involve provoked or unprovoked acts and can be a single incident, a random act or can occur over time.

These definitions outline key characteristics and have been taken from Student Wellbeing Hub <https://studentwellbeinghub.edu.au/resources-and-help/Glossary?origin-host=www.safeschoolshub.edu.au#/>

TAKE A STAND TOGETHER

# BULLYING. NO WAY!

www.bullyingnoway.gov.au



## MILDURA SPECIALIST SCHOOL LEADERS FOR 2022.

This week elections of School Captains, Sports House Captains and Senior SRC Representatives were completed and votes were counted. Presenting the School Leaders for 2022. Congratulations to all our representatives.



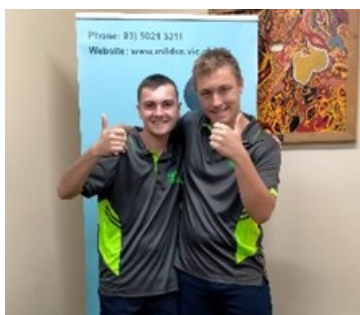
School Captains are (L to R): Seth and Indi, Vice-captains Chloe and Austin.



Senior SRC Reps (L to R): Abbie, Ethan, Emily and Anthony.



Green house captains: Rebecca and Stephen



Yellow house captains: Zane and Brandon.



Red house captains: Kathryn and Lachlan.



Blue house captains: Isac and Kira. Kira absent.

## PRIMARY SRC

Clean Up Australia week was well supported across the school. Classes were out cleaning up different areas of the yard and boundary fences to make sure the whole school sparkled. Thank you to everyone who did their bit. We have seen lots of colouring pages around which students took care in completing. The big event was a great suggestion at one of our meetings of making a "Rubbish Mascot" from classroom rubbish. Congratulations to the groups who took part. Here are some photos of what was made. The winner of the SRC judging was Room 8 – Congratulations.



Room 15 - Peggy



Room 8 'Stinky' the robot. Eats rubbish and turns it into kids' lunches. 100 percent recycled materials Made in Australia



Room 2 – Each child made a mascot. Here are two creations by Jylan and Rhyan.



## Principal Awards

Room 4 - Hannah: for being a good role model and encouraging her peers to make positive choices.  
Room 9 - Noah: for assisting a younger SRC member during the meeting.  
Room 10 - Deshawn: for remembering information about secondary colours from the previous week.  
Room 10 - Deshawn: for making and writing numbers to 100, using MAB (Multibase Arithmetic Blocks).  
Room 10 - Kye: for being on time and reminding everyone when to do things.  
Room 11 - Oscar: for fantastic participation in Drumming.  
Room 11 - Patrick: for using his communication device independently.  
Room 11 - Enzo: for listening and following instructions to make fairy bread in cooking.  
Room 15 - Jonah: for using his Eye Gaze enthusiasm.  
Room 15 - Kayla: for independent work investigating her Eye Gaze Programs.  
Room 16 - Alivia: for making independent choices during Art  
Room 17 - Carter: for exploring the sensory smells and textures for the rainbow colours.  
Room 22 - Johbi: for his consistent manners and helping others.  
Room 23 - Ebonie: for helping out in Room 23.  
Room 23 - Emily: for demonstrating honourable qualities when competing with her classmates for SRC representative.  
Room 24 - Graham: for independent work in Art with great results.  
Room 24 - Tyana: for persistence and improvement whilst bike riding.  
Room 25 - Brandon: for showing such kindness and patience when showing a younger student how to play T-ball in the yard.  
Darling Room - Star: for positive attitude to something new when trying the guitar for the first time.

## SWPBS Awards

Room 10 - Fida :for using his inside voice when talking to others in the classroom.  
Room 10 - Jayda: for following staff instructions to complete work and tidy her work space safely.  
Room 11 - Lacie: for following instructions to complete personal hygiene/toileting with minimal prompts.  
Room 11 - Milan: for following instructions at Lawn Bowls, participating in bowling and by trying something new.  
Room 15 - Zehwaya: for listening to staff and safely transitioning off the round swing.  
Room 15 - Charles: for safely using equipment in the playground.  
Room 22 - Kyle: for attempting all his work, with only brief prompts.  
Room 23 - Isayah: for always following instructions.  
Room 25 - Harley: for using kind words towards office staff when waiting to access the first aid room.

## THE ARTS

The Specialist Art teaching staff Sarah, Judi, Shana, Bob and Karyn have been very busy working to ensure all students at the school create a self-portrait. They will be made into a display for all students to view. Each teacher has taken a different approach, so it will be very exciting to see what they will all look like. Shanelle Room 2, Byron Room 20 and Matthew Room 23 self-portraits. They look fantastic!!



In Music students are learning about different types of beats. Drumming, clapping, using rhythm sticks or playing a ukulele to the beat of different types of music. Jayda from Room 11 playing the Djembe drum.



## EARLY YEARS' NEWS



In Room 1 this fortnight we made Pancakes for Pancake Tuesday.



Harrison has been practising writing his name.



Braxton painted a beautiful sunset with the class in Art.

Room 2 student made an amazing Spongebob from rubbish in the Clean up Australia activity last week.



Shanelle made a dragon face, Ryan made a shark, Liam made an Optimus Prime and Jylan made a transformer.

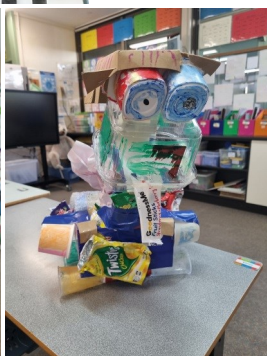
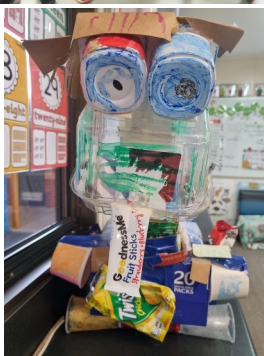
## UPPER PRIMARY YEARS' NEWS

In Upper Primary this week we enjoyed learning from the SRC Reps about Clean Up Australia Day. Room 8, 6 and 4 made mascots out of rubbish. Room 9 completed Clean up Australia colouring and cleaned the recycle bins on Friday afternoon.

**'Stinky' the robot Room 8.**



**Herbert by Room 4**



**Clossie the Clean Up Aussie Rubbish eating Dinosaur by Room 6.**



Room 6 pieced together a map of Australia in Geography and found the school using google maps.

## SECONDARY PreCAL NEWS

Star and Quinn worked really hard during the Clean Up Australia Day activities. This bag of rubbish was collected in 30 mins out the front of the school.

Students in room 20 have been researching the world map to find Ukraine. The students created PowerPoint presentations detailing the country as they are feeling empathy for the people and their dire situation.



Mr Jono's Darling Room students have had a busy term, learning about calendars, time, work readiness, mindfulness and healthy diets. Pictured is our classroom legend Leanne working with Star and Ty. We are very proud of the engagement that occurs during learning time.



Room 22 made pancakes to celebrate Pancake Tuesday. They learnt some measuring skills and how to read a recipe. They tasted very good.





## SECONDARY—PAL NEWS

PAL students have started participating in lawn bowls training at the Mildura Workers Bowls Club. Students are developing their skills in preparation for the Mallee Sports Assembly All Abilities Lawn Bowls Carnival. Students in room 13 have been practising making yes/no decisions based on items of interest. Below, Mert is sitting on the trampoline and Reece chose to use the new nest swing. Thanks to Wentworth and District Community Bank for your financial support in purchasing this item.

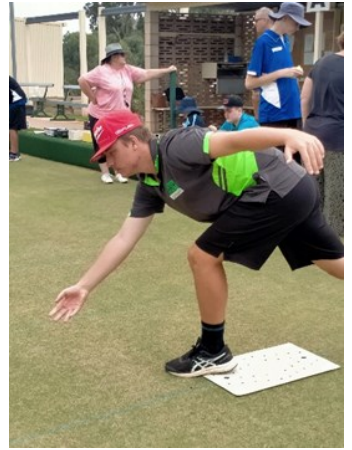
Other PAL students have been developing their independent living skills. Benjamin is spreading vegemite and butter onto a piece of bread.

Upcoming events:

Thursday March 17 - Colour Fun Run

Friday March 18 - School Photos and Lawn Bowls Carnival

Monday March 21 to Friday March 25 – Lake Cullulleraine



## SECONDARY—VCAL AND VAL NEWS

There is no time to rest in the VCAL section this term! Our Year 10 students have had a taste of work life, having begun visiting IGA for practical learning as part of their Retail outcomes. Students get to understand the layout and products being sold at IGA, as well as gain knowledge about what it takes to work as part of a team, within a community setting. Well done to the Year 10s and also to the Year 11s who have been using their experience, to help assist and guide others.

Rooms 18 and 19 have been working very hard to collect and collate data for two major events being held this semester: The Colour Fun Run and the VCAL Store. We would like to thank everyone for their input and ongoing support. We will have more information coming soon.



# March 2022

Sunday	Monday	Tuesday	Wednesday	Thursday	Friday	Saturday
		1 Lunch orders due in.	2	3	4	5
6	7	8 Lunch orders due in.	9	10	11	12
13	14 Public Holiday. No school	15 Lunch orders due in.	16	17 Yr 7 immunisations and meningococcal.	18 School Photos	19
20	21	22 Lunch orders due in.	23	24	25	26
27	28	29 Lunch orders due in.	30	31		

Lake Cullulleraine day excursions Upper Primary to VCAL students.

© BlankCalendarPages.com

# April 2022

Sunday	Monday	Tuesday	Wednesday	Thursday	Friday	Saturday
					1 Easter Raffle tickets to be returned.	2
3	4 Easter Raffle drawn	5	6	7	8 Last Day of Term 1—early departure.	9
10	11	12	13	14	15	16
.....School Holidays .....						
17	18	19	20	21	22	23
.....School Holidays .....						
24	25 ANZAC Day Public Holiday. No school.	26 1st day of Term 2	27	28	29	30

© BlankCalendarPages.com



## Mildura Specialist School

7 March 2022

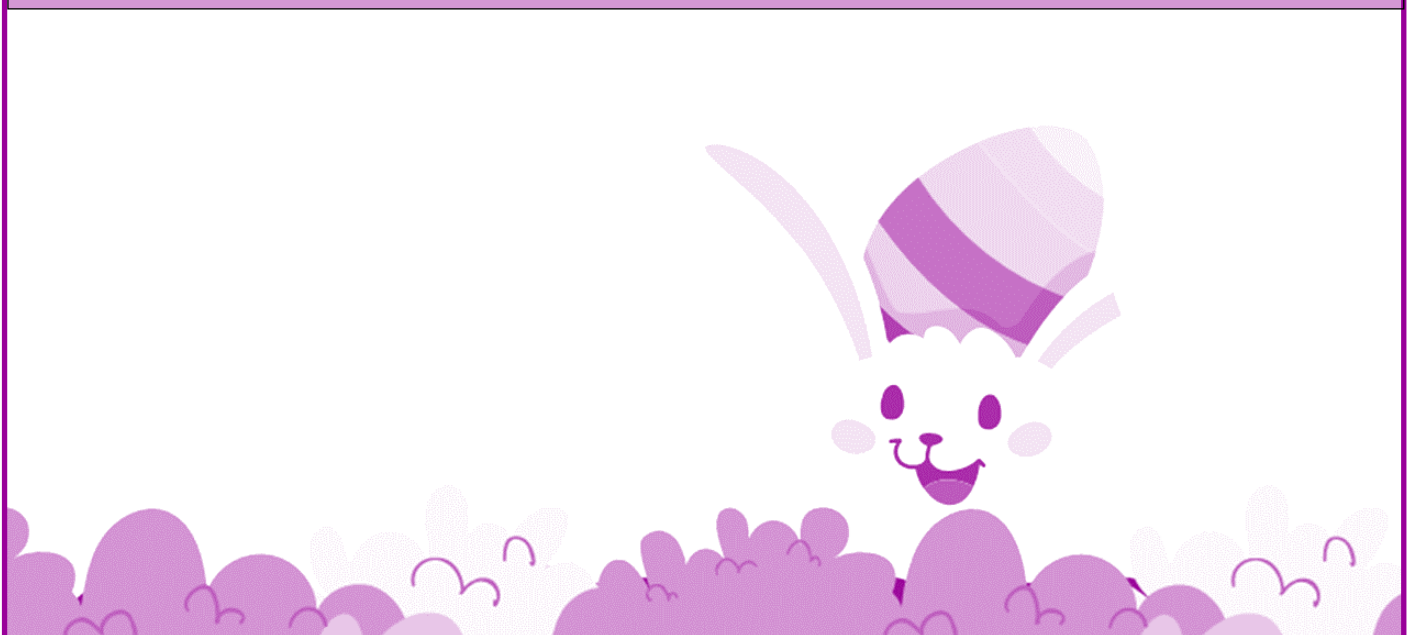
Dear Parents/Carers

Welcome to our first fundraiser for the year, the annual Easter Raffle.

It would be greatly appreciated if you could donate an Easter egg or novelty item towards our hamper baskets. These can be left at the front office.

Please return all raffle books sold or unsold by Thursday 1 April. The draw will take place on Monday 4 April

Cathie Toma  
Fundraising Coordinator





## **SCHOOL REMINDERS**

### **EXCURSIONS**

All excursions can be paid by instalments, either at the school office or online through the school account. See above for details for the school bank account.

Please ensure all relevant forms are signed and returned with payment before the due date.

### **PAYMENTS**

School fees, camps, excursion and cooking costs etc. can be paid to our Bank Account details are

**Commonwealth Bank**

**BSB: 063 557**

**Account No: 10080861**

Please enter the name of student and activity you are paying for.

Thankyou

### **CAMPS, SPORTS AND EXCURSION FUNDS (CSEF)**

The Camps, Sports and Excursions Fund (CSEF) commenced in 2015.

Families holding a valid means-tested concession card (Centrelink Card/Health Care Card) or temporary foster parents are eligible to apply for CSEF. \$125 per year is paid for eligible primary school students, and \$225 per year is paid for eligible secondary school students. A special consideration eligibility category also exists. Payments are made directly to the school.

### **MEDICAL**

At Mildura Specialist School we have children who are at risk of an anaphylactic reaction to **nuts** in the school. Please be mindful of this when preparing your child's lunch or snacks.



### **HEADLICE**

As a school community, we share the responsibility to control and manage head lice infections. Head lice have been around for many thousands of years and cannot be eradicated. Supporting each other to minimize their spread is vital.

It is important to check your child's head regularly with conditioner and comb even when you don't think your child has head lice.

### **MEDICATION**

In the interests of safe practice, medication must be brought to the office in its original packaging by an adult and paper work completed to authorise school personnel to administer it.

**Please note: Students are not to transport medication to school.**

**CANTEEN NEWS** The canteen will operate each Friday; orders must be completed and returned to school no later than Tuesday morning of that week. Order forms are available from the school office or can be downloaded and printed from the MSS website.

**All lunch orders must be in on Tuesday mornings.**



### **UNIFORMS**

Our school uniforms are supplied by LASER SIGN & PRINT and are available from 3 Andriske Crt Mildura. Contact person is Darran Seaman, phone: 03 5021 1129 mob: 0429 437 858. For all other enquiries for uniforms please contact the school.

### **PARENT/GUARDIAN/CARER CONCERNS**

If you have a concern with any aspect of your child's education, please contact the Office (5021 3311). They will:

1. Put you in touch with the appropriate person
2. Help organise a meeting with the appropriate person.

It is important that your concerns are addressed as quickly as possible.

### **IMPORTANT NOTICE**

Parents/Carers please take note of Parent Pick Up times.

**Early Years and Upper Primary Years: 2:40—2.50 PM**

**Secondary Years and VCAL. 2.50—3.00PM**

This is to help ease congestion on Deakin Ave and for safety of cars and students.

